

UNINCORPORATED MARTIN COUNTY

AMENDED PLAT OF PALM CITY

P.B. 6, PG. 41
(PALM BEACH COUNTY RECORDS)

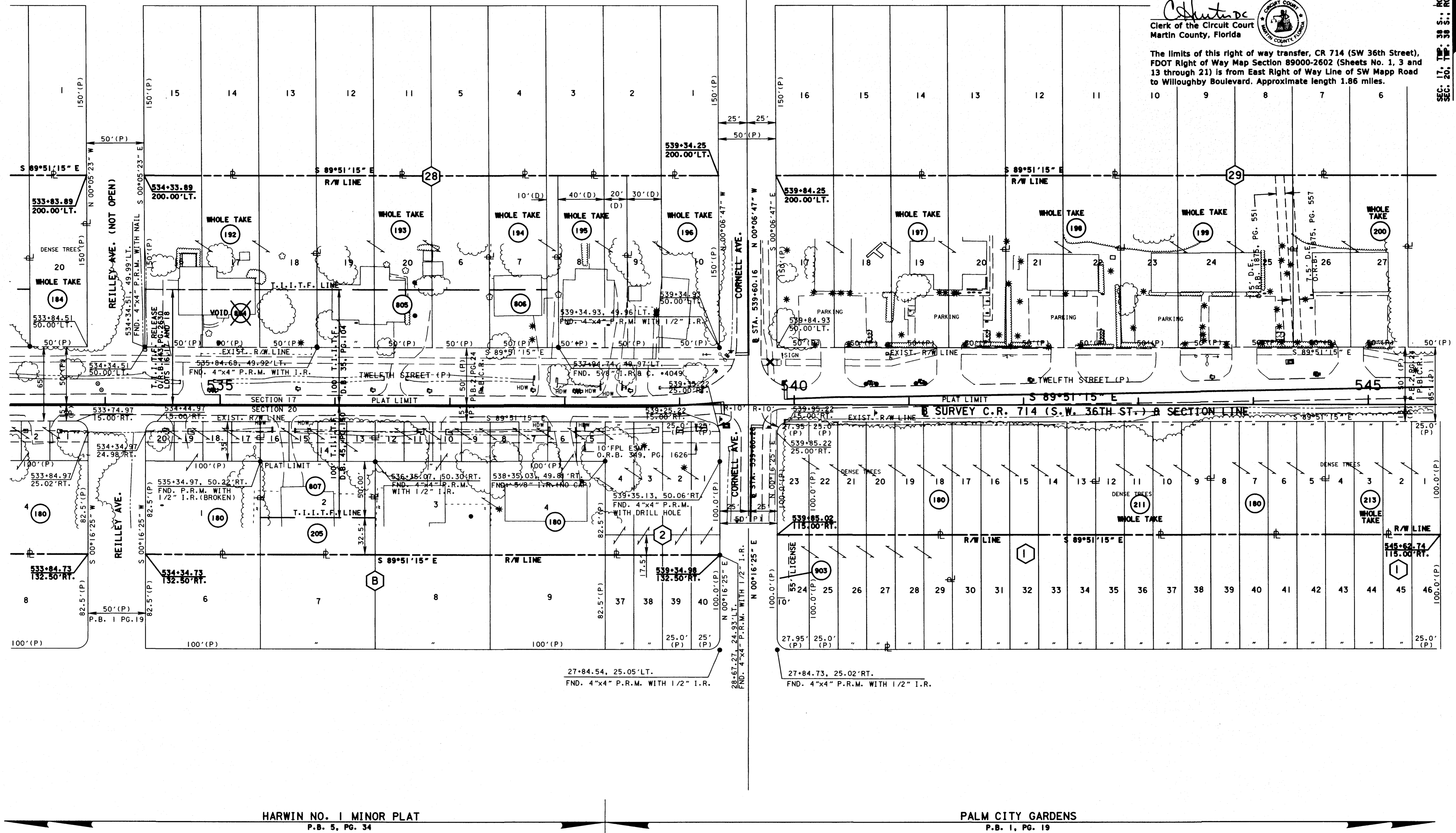
This right of way map when recorded is an instrument of conveyance, transferring in accordance with the Florida Statutes 337.29, all right, title, and interest in the road, street, or highway shown herein, from the Florida Department of Transportation to Martin County.

Recorded in Public Records of Martin County, Florida, this 11th day of April, A.D. 2014, in Road Plat Book 15, Page 23.

Collette De
Clerk of the Circuit Court
Martin County, Florida

The limits of this right of way transfer, CR 714 (SW 36th Street), FDOT Right of Way Map Section 89000-2602 (Sheets No. 1, 3 and 13 through 21) is from East Right of Way Line of SW Mapp Road to Willoughby Boulevard. Approximate length 1.86 miles.

SCALE: 1" = 40'
SEC. 17, TWP. 38 S., RGE. 41 E.,
SEC. 20, TWP. 38 S., RGE. 41 E.



HARWIN NO. 1 MINOR PLAT
P.B. 5, PG. 34

PALM CITY GARDENS
P.B. 1, PG. 19

UNINCORPORATED MARTIN COUNTY

NOT A SURVEY

SEE SHEET ONE FOR LEGEND AND GENERAL NOTES

C.R. 714 (S.W. MARTIN HWY.)
FROM THE FLORIDA TURNPIKE TO S.E. WILLOUGHBY BLVD.

RIGHT OF WAY MAP

FLORIDA DEPARTMENT OF TRANSPORTATION
RIGHT OF WAY MAPPING

APPROVED BY: *[Signature]*
DATE: 2/23/09
RIGHT OF WAY SURVEYOR

REVISION	BY	DATE	BY	DATE
ADD PARCEL 903	T. BROWN	06-29-10	PRELIM	DURVEA 04-12-02
VOID 804, REV. 192	T. BROWN	03-29-10	FINAL	SANCHEZ 09-30-02
			CHECKED	WILHELM 10-04-02

FED. PROJ. NO. SEE COVER SHEET
SECTION 89000-2602
COUNTY ROAD NO. 714
MARTIN COUNTY

MAPS PREPARED BY: KEITH & SCHNARS, P.A.
W.P.I. No. N/A
ITEM/SEGMENT No. 230978-1
FIELD BOOK NO. 'S
SEE SHEET NO. 1
SCALE: 1" = 40'
SHEET 14 OF 26